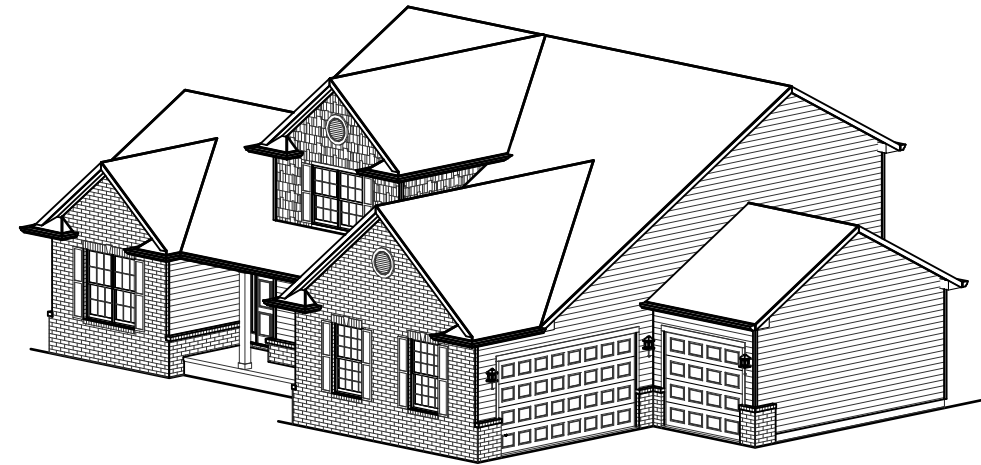
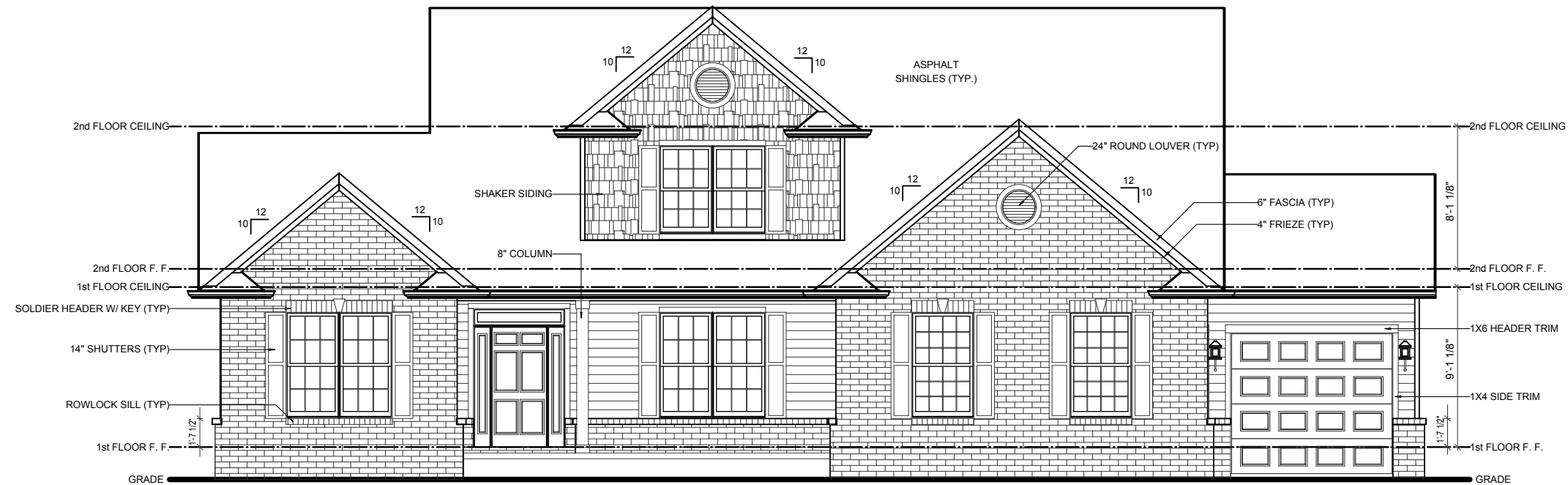


FRONT-LEFT



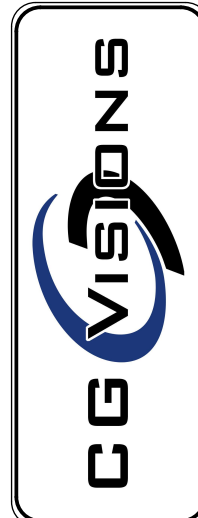
FRONT-RIGHT



FRONT ELEVATION The McShay

SCALE: 1/8"=1'-0"

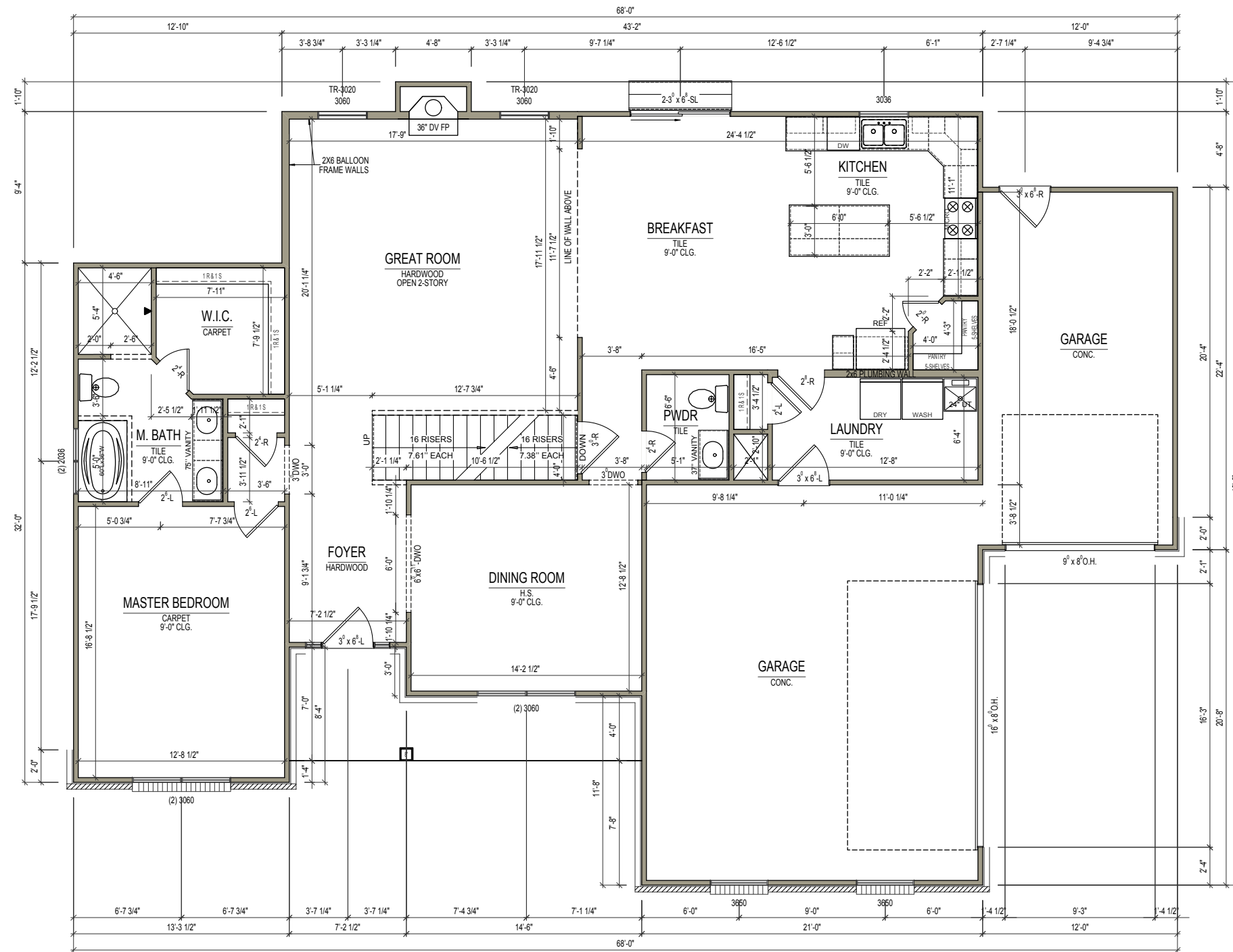
ELEVATION A	REV. NO.	DATE	REMARKS
GARAGE LEFT	REV #1	12/01/2011	Stretched 1'-4" In Dining, Stone to Brick.
	REV #2	12/02/2011	Reverse to Garage Right.
	REV #3		
	C.O. #1		
	C.O. #2		



LOT-129	PRINT DATE:
FOR: Komark	12/20/2011
LOCATION:	
LOT #:	
SHEET NUMBER	
A-01	

FLOOR PLAN NOTES:

1. ALL DIMENSIONS ARE TO THE ROUGH FRAME OF STUDS
2. CENTER ALL OPENINGS UNLESS OTHERWISE NOTED
3. THESE PLANS ARE NOT TO BE SCALED FOR CONSTRUCTION PURPOSES
4. FINAL CABINET LAYOUT WILL BE DESIGNED BY CABINET SUPPLIER
5. IT IS THE CONTRACTOR'S RESPONSIBILITY TO VERIFY THE ACCURACY OF ALL DETAILS AND DIMENSIONS
6. VERIFY WITH THE WINDOW MFG. ALL WINDOW SIZES AND EGRESS REQ.



FIRST FLOOR PLAN The McShay

SCALE: 1/8"=1'-0"

ELEVATION A	REV. NO.	DATE	REMARKS
GARAGE LEFT	REV #1	12/01/2011	Stretched 1'-4" In Dining, Stone to Brick.
	REV #3	12/02/2011	Reverse to Garage Right.
	REV #2		
	C.O. #1		
	C.O. #2		



LOT-129	PRINT DATE: 12/20/2011
FOR: Komark	
LOCATION:	
LOT #:	
SHEET NUMBER	
A-07	

FLOOR PLAN NOTES:

1. ALL DIMENSIONS ARE TO THE ROUGH FRAME OF STUDS
2. CENTER ALL OPENINGS UNLESS OTHERWISE NOTED
3. THESE PLANS ARE NOT TO BE SCALED FOR CONSTRUCTION PURPOSES
4. FINAL CABINET LAYOUT WILL BE DESIGNED BY CABINET SUPPLIER
5. IT IS THE CONTRACTOR'S RESPONSIBILITY TO VERIFY THE ACCURACY OF ALL DETAILS AND DIMENSIONS
6. VERIFY WITH THE WINDOW MFG. ALL WINDOW SIZES AND EGRESS REQ.



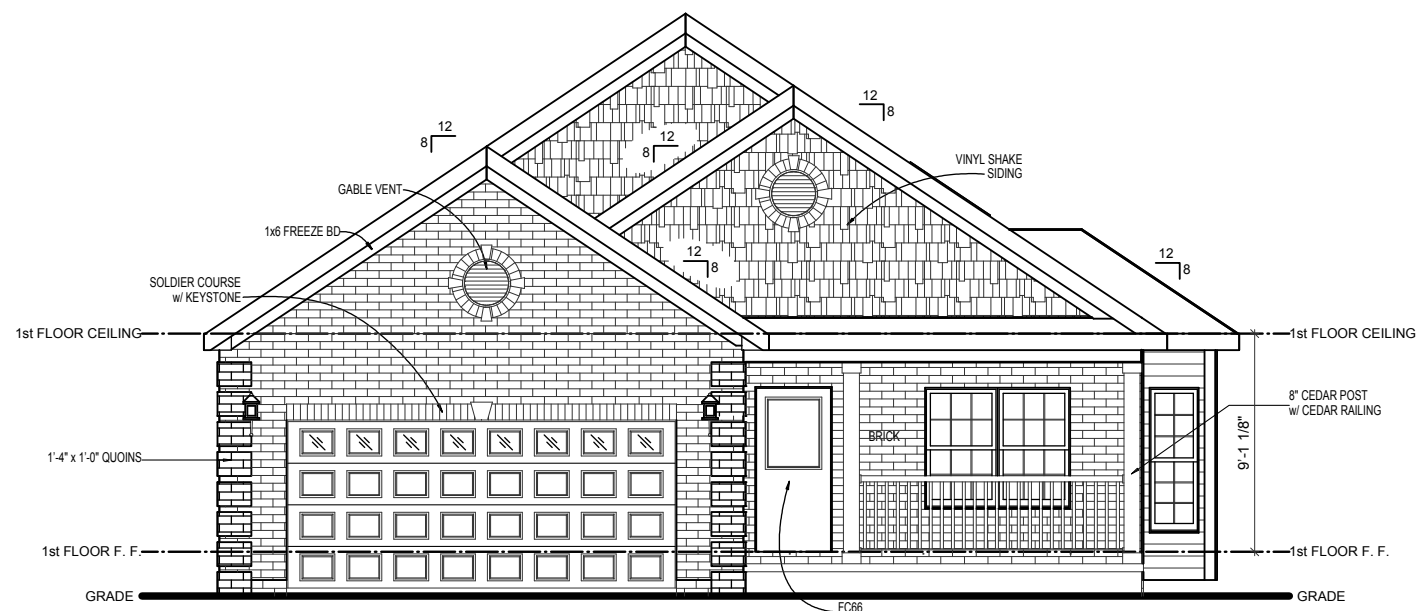
SECOND FLOOR PLAN The McShay

SCALE: 1/8"=1'-0"

ELEVATION A	REV. NO.	DATE	REMARKS
GARAGE LEFT	REV #1	12/01/2011	Stretched 1'-4" In Dining, Stone to Brick.
	REV #2	12/02/2011	Reverse to Garage Right.
	REV #3		
	C.O. #1		
	C.O. #2		



LOT-129	PRINT DATE: 12/20/2011
FOR: Komark	
LOCATION:	
LOT #:	
SHEET NUMBER	
A-08	



FRONT ELEVATION The Scarlett

SCALE: 1/8"=1'-0"

Komark Contact Information

P.O. BOX 1623
Lafayette, IN 47902
765-423-1510

KOMARK^{LTD.}

CG VISIONS

8 North 2nd Street, Suite 301
Lafayette, IN 47901
(765) 420-0190 (765) 420-0272 fax



PRINT DATE:
02/06/2012

Lot 26

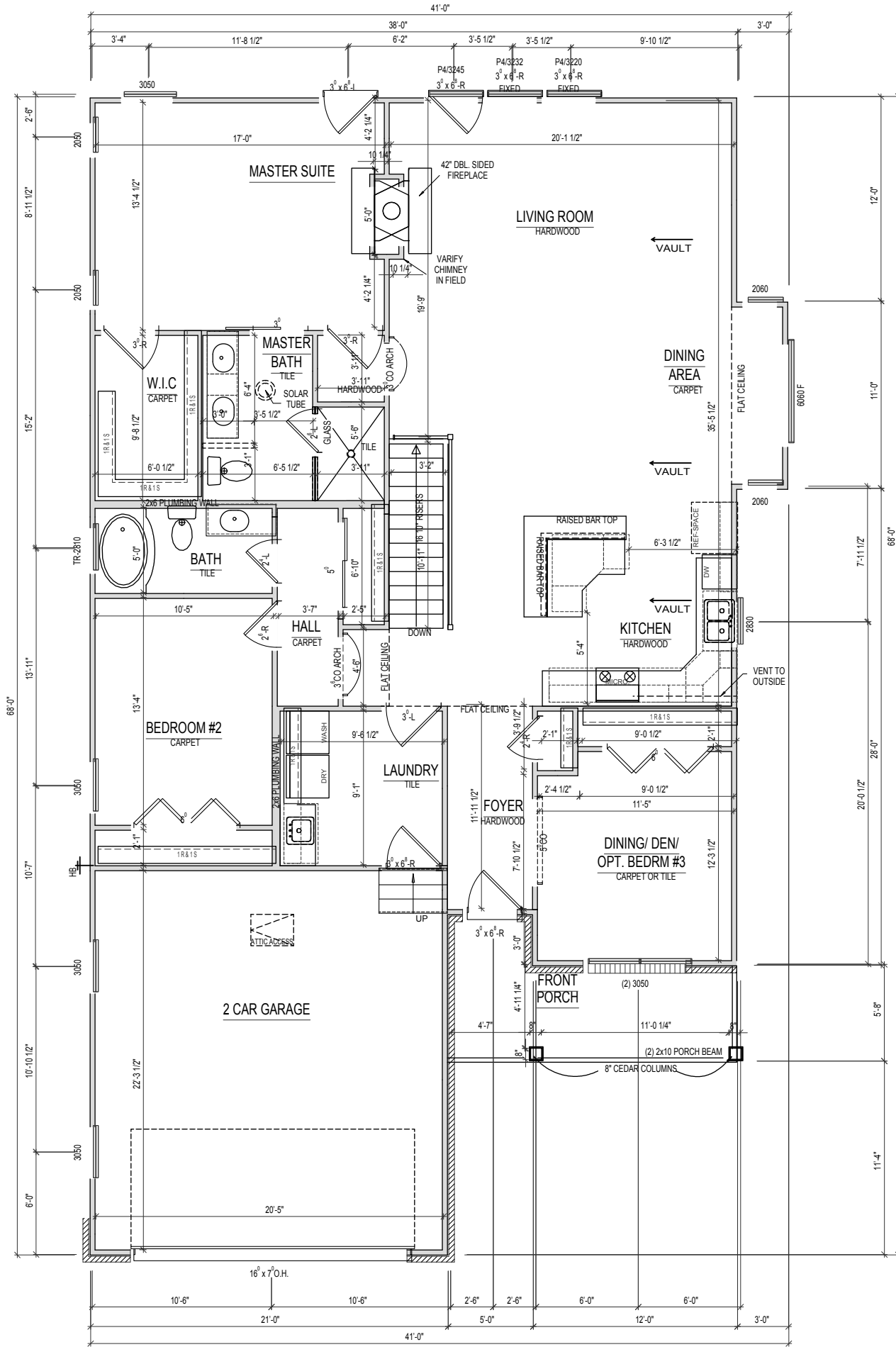
FOR: KOMARK

LOCATION:

LOT #: 26

SHEET NUMBER

A-01



FIRST FLOOR PLAN

SCALE: 1/8"=1'-0"

Lot 26

FOR: KOMARK

LOCATION: _____

LOT #: 26

SHEET NUMBER

A-06

PRINT DATE:
02/06/2012

CG VISIONS

8 North 2nd Street, Suite 301
Lafayette, IN 47901
(765) 420-0190 (765) 420-0272 fax



Komark Contact Information

P.O. BOX 1623
Lafayette, IN 47902
765-423-1510

KOMARK